

www.jbfe.co.za



ASSET MANAGEMENT

ADVISORY

COMPLIANCE

INTEGRATION

Professional bodies JBFE team members are registered with:

- SAICA
- SAIPA
- SAICE
- ECSA
- IMIESA
- IMFO

**GRAP COMPLIANT
ASSET ACCOUNTING
SPECIALISTS**

Our Civil Engineering team consist of qualified Technicians, Technologists and Engineers with experience ranging from 5 to 22 years' and are ECSA registered.

Our Accounting Advisory team consist of professionally registered CA's and Accountants with SAICA and SAIPA.

AREAS OF
EXPERTISE

ENGINEERING
ACCOUNTING
SUPPORT
VALUATION



Salerno and Positano Buildings,
Il Villaggio Office Park,
Persequor Technopark,
Meiring Naude Road,
Lynnwood, Pretoria, 0081



Tel: (012) 349 1129
Fax: (012) 349 1131
Cell: 082 414 7788



jacques@jbfe.co.za

**100% proudly
| South African owned**

WHO ARE WE

JBFE commenced business in 1998 as a Closed Corporation, rendering Civil and Mining Engineering and IT consulting services. JBFE Consulting (Pty) Ltd is **100% proudly South African owned**, managed and operated company. JBFE and / or its core members have been actively involved in the Asset Management / Accounting environment since 2003, doing some pioneering work with other industry leaders and specialists (both local and international). In doing so JBFE has become recognized GRAP compliance and implementation specialists with specific focus on GRAP 17 (immovable assets) and all associated GRAP standards (16, 12, 100, 19, 21, 31, 103, etc.). We are chartered accountants, professional civil and electrical engineers, professional property valuers and GRAP accounting specialists.

JBFE started focusing, as specialists, on **GRAP and legislative compliant asset management** and accounting in 2003 through the involvement of Jacques du Toit, with various organisations. JBFE CC was converted to JBFE Consulting (Pty) Ltd in 2009, with specialist consulting as its core business, focusing on Integrated Asset Management and Asset Accounting.



www.jbfe.co.za

OUR SERVICES



ASSET MANAGEMENT

- Hierarchy establishment
- Verification of assets
- Identification of assets
- Componentising of assets
- Condition assessment
- Economic useful life determination
- Remaining useful life estimation
- Valuation rates and assets
- Review of residual values
- Maintenance Policies
- Asset Management Policies
- Practical experience skills transfer

ADVISORY

- Actual cost determination
- Legislative and regulatory compliance (PFMA, MFMA, Treasury Regulations)
- GRAP Compliance
- Review of assets for impairment
- Methodologies used for asset register establishment
- Impairment testing
- Accounting Policies
- Practical experience skills transfer
- Valuations

COMPLIANCE

- Legislative and regulatory compliance (PFMA, MFMA, Treasury Regulations)
- Reporting support on financial statements
- Annual GRAP reviews and implementation of updates
- Improvement of internal control structures
- Training in work performed
- Skills development
- Management framework
- Audit support



1. Services include the establishment of the statement of the position of infrastructure assets in the financial statements based on the GRAP standards, with specific reference to GRAP 17 PPE, GRAP 16 Investment Properties, GRAP 12 Immovable Properties Held for Sale.
2. The establishment and implementing of an Asset Accounting and Management Policy, condition assessment and unbundling of all PPE assets.
3. Develop and capturing thereon in a Financial Asset Register (FAR).
4. Integrated and Consolidated Asset Management Plans (iAMP).
5. Maintenance and Budgeting Strategies based on Asset Life-Cycle analysis.
6. Valuation rolls and property valuations.

OUR SERVICES

The team skills vary and have experience in various fields of **specialisation** including, but not limited to:

- Civil Engineering on multi discipline projects
- Construction and maintenance of labour based projects (EPWP)
- Labour intensive construction (LIC)
- Civil Engineering Administration
- AutoCAD draughting
- Project Management
- Construction Management
- Contract Management
- Project Planning
- Water & Waste water testing
- Civil Engineering and detail design of Commercial, Industrial, Residential and Municipal infrastructure
- Detail design of Bulk earthworks, sewer, stormwater and water reticulation systems
- Mapable and ArcGIS

The **Accounting Advisory** team's experience varies between 1 to 7 years and includes, but is not limited to the following fields of specialisation:

- Auditing
- Financial Accounting
- Infrastructure Asset Management
- Infrastructure Asset Accounting
- Financial statement drafting
- Programme and Project Management
- Risk Assessment



THE TEAM

JBFE have knowledge and experience in application of various **legislation and standards** including, but not limited to:

- GRAP
- IFRS
- PFMA
- MFMA
- ISO
- GCC
- JBCC
- FIDIC
- SANS
- OHS
- TRH
- White Paper on National Transport Policy & Integrated Transport Plans.

Accounting Advisory Team, is supported by our Support Team, consisting of GIS / Database Administrator, who is also studying Civil Engineering and an IT Manager and HR Manager that has over 10 years' experience in their fields of specialisation.

Professional bodies JBFE team members are registered with:

- SAICA
- SAIPA
- SAICE
- ECSA
- IMIESA
- IMFO

ENGINEERING

ACCOUNTING

SUPPORT

VALUATION



EXPERTISE

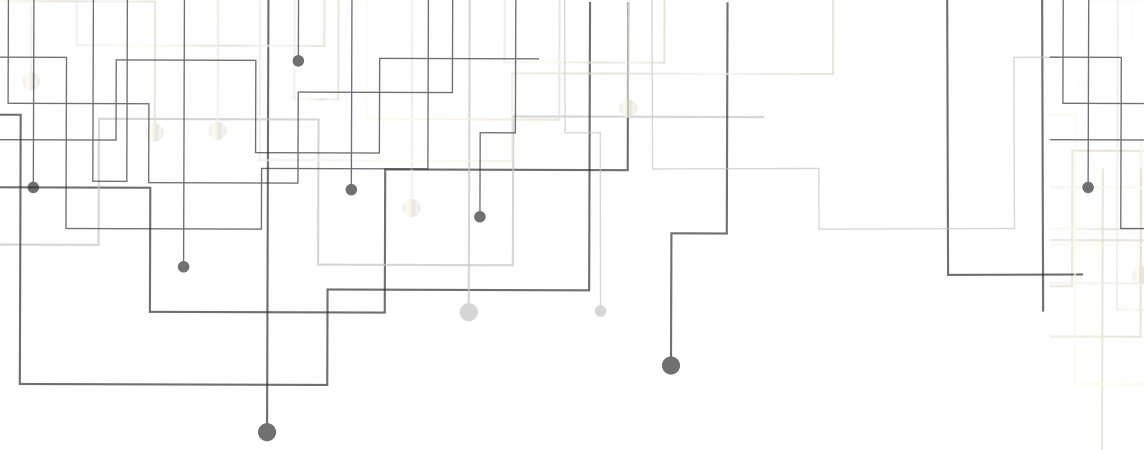
JBFE is currently involved with 12 North West Provincial Treasury projects as appointed GRAP 17, 16 and 12 asset accounting specialists.

- North West Provincial Treasury - MFMIP Phase II Compliant Asset Management & Accounting (2014/2015 FY)
- Kgetlengriver Local Municipality
- Tswaing Local Municipality
- Mahikeng Local Municipality
- Ditsobotla Local Municipality
- Ramotshere Moiloa Local Municipality
- Mamusa Local Municipality
- Greater Taung Local Municipality
- Maquassi Hills Local Municipality
- Ratlou Local Municipality
- North West Provincial Treasury - MFMIP Phase III Compliance Asset Management & Accounting (2015/2016 FY)
- Kgetlengriver Local Municipality
- Tswaing Local Municipality
- Mahikeng Local Municipality
- Ditsobotla Local Municipality
- Ramotshere Moiloa Local Municipality
- Mamusa Local Municipality
- Greater Taung Local Municipality
- Maquassi Hills Local Municipality
- Ratlou Local Municipality
- Moretele Local Municipality – GRAP 17 Compliant Asset Management and Asset Accounting – 2016
- (Ref: JF du Toit) – Mangaung Metropolitan Municipality – GRAP 17 Compliant Asset Management and Accounting – 2014
- (Ref: JF du Toit) – Ekurhuleni Metropolitan Municipality – GRAP 17 Compliant Asset Management and Accounting – 2013

- BUILDING ENGINEERING
- ELECTRICAL ENGINEERING
- CIVIL ENGINEERING
- VALUATOR
- LAND AND FARM VALUATIONS
- PROFESSIONAL TECHNOLOGIST (ENGINEERING)
- PROFESSIONAL ENGINEERING TECHNOLOGIST
- TAX SPECIALIST
- IFRS AND ACCOUNTING STANDARDS
- FIXED ASSETS MANAGEMENT
- PAYROLL

PROJECTS





Establishment of Asset Registers

Maintenance of Asset Registers

**Establishment and Maintenance
of Policies**

Skills Development and Transfer

